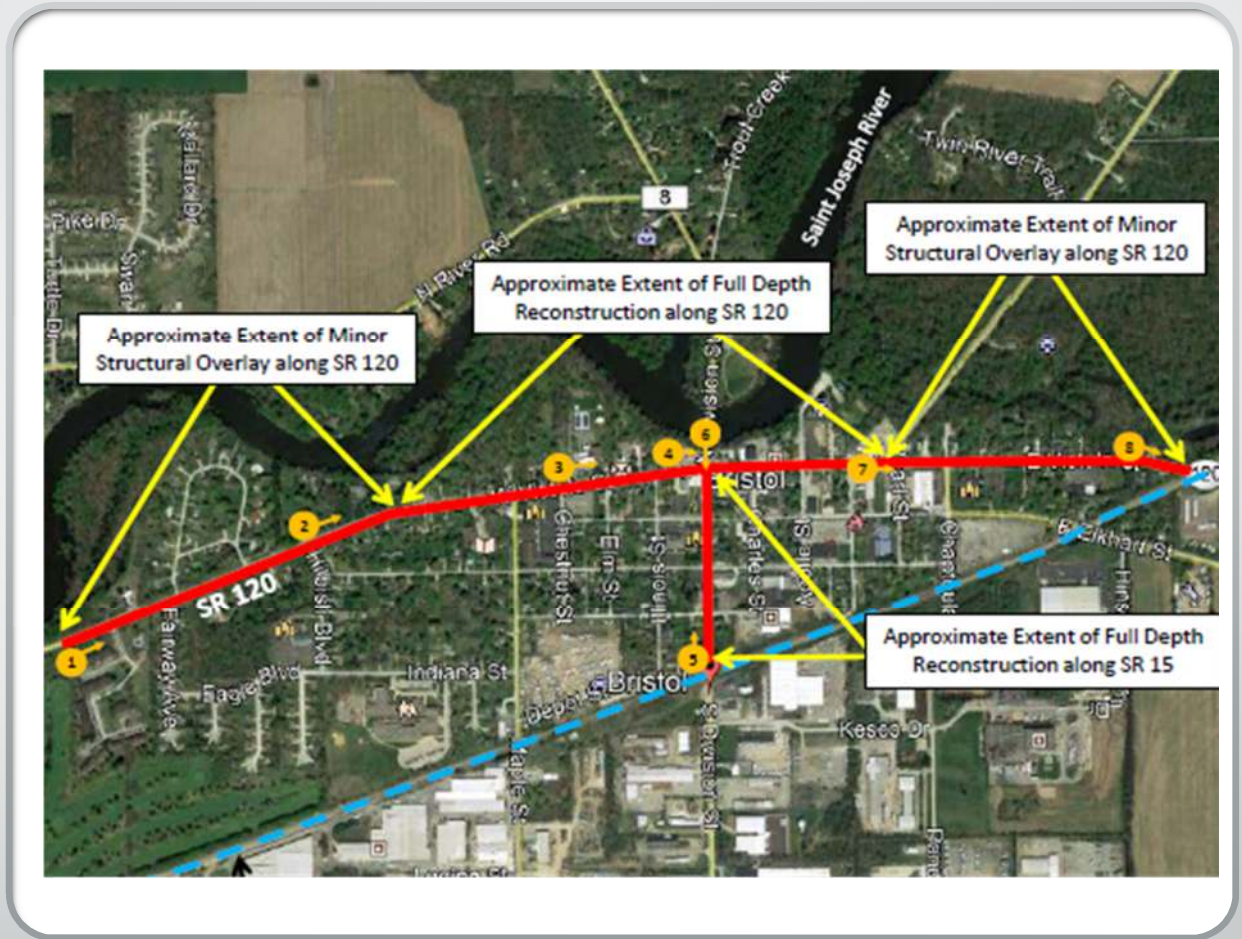


SR 120 and SR 15 Pavement Replacement

Planned work, Anticipated Schedule, Project Contacts

Planned Work

- SR 120
 - Overlay from just west of the Bristol Wastewater Treatment Plant to about 600 ft east of Hilbish
 - Full reconstruction from 600 ft east of Hilbish to the east side of Chaptoula
 - Overlay from east side of Chaptoula to just east of the railroad tracks
- SR 15
 - Full reconstruction from the railroad tracks to SR 120

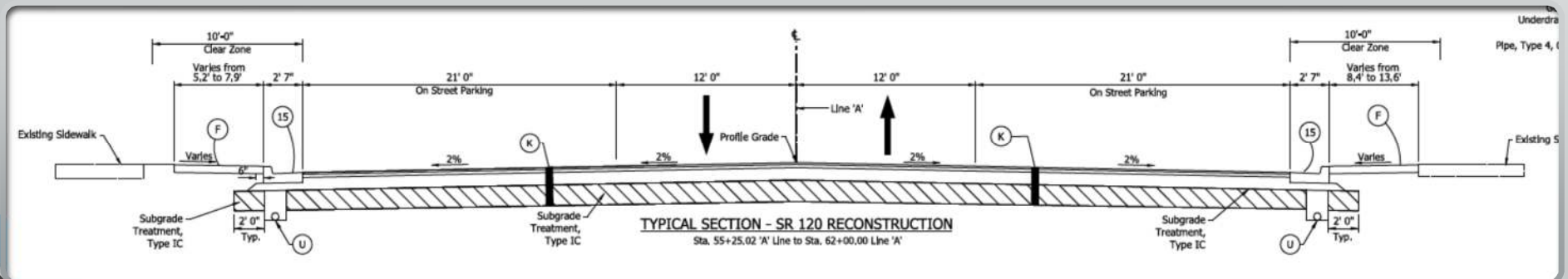


Project Staff

- Brandon French – INDOT Project Manager
- Melissa Cool – INDOT Field Engineer
- Pat Plunkett – Rieth Riley Construction Project Superintendent
- Derek Sauer – Rieth Riley Project Estimator

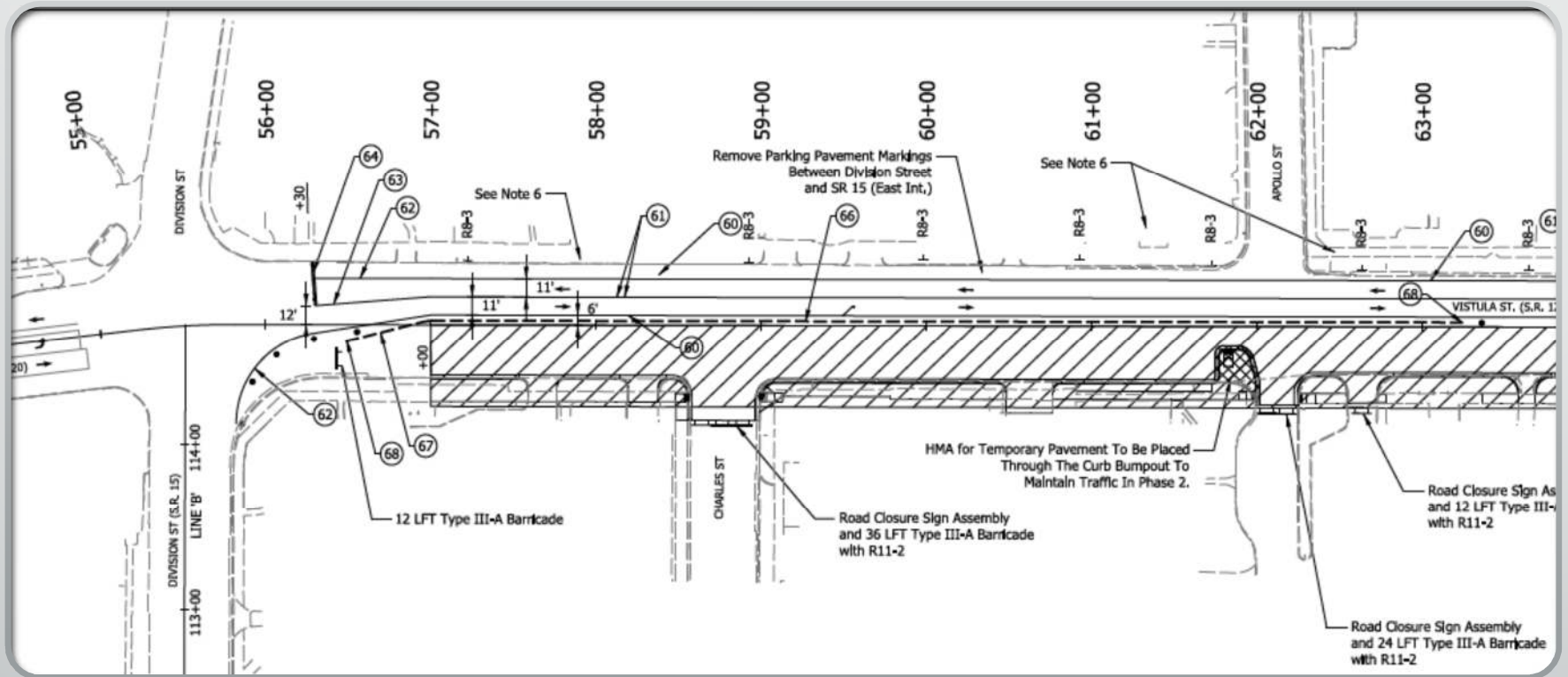
Work Includes...

- Overlay areas will be milled 4" and new intermediate and surface asphalt placed. Drives within the overlay area will be resurfaced.
- Reconstructed areas will have all old pavement and subgrade removed. 12" of stone and 15" of asphalt placed along with new curb and gutter.
- Reconstructed areas will also have all new storm pipe and inlets placed, all drive and intersection approaches removed and replaced and new curb ramps at each intersection.





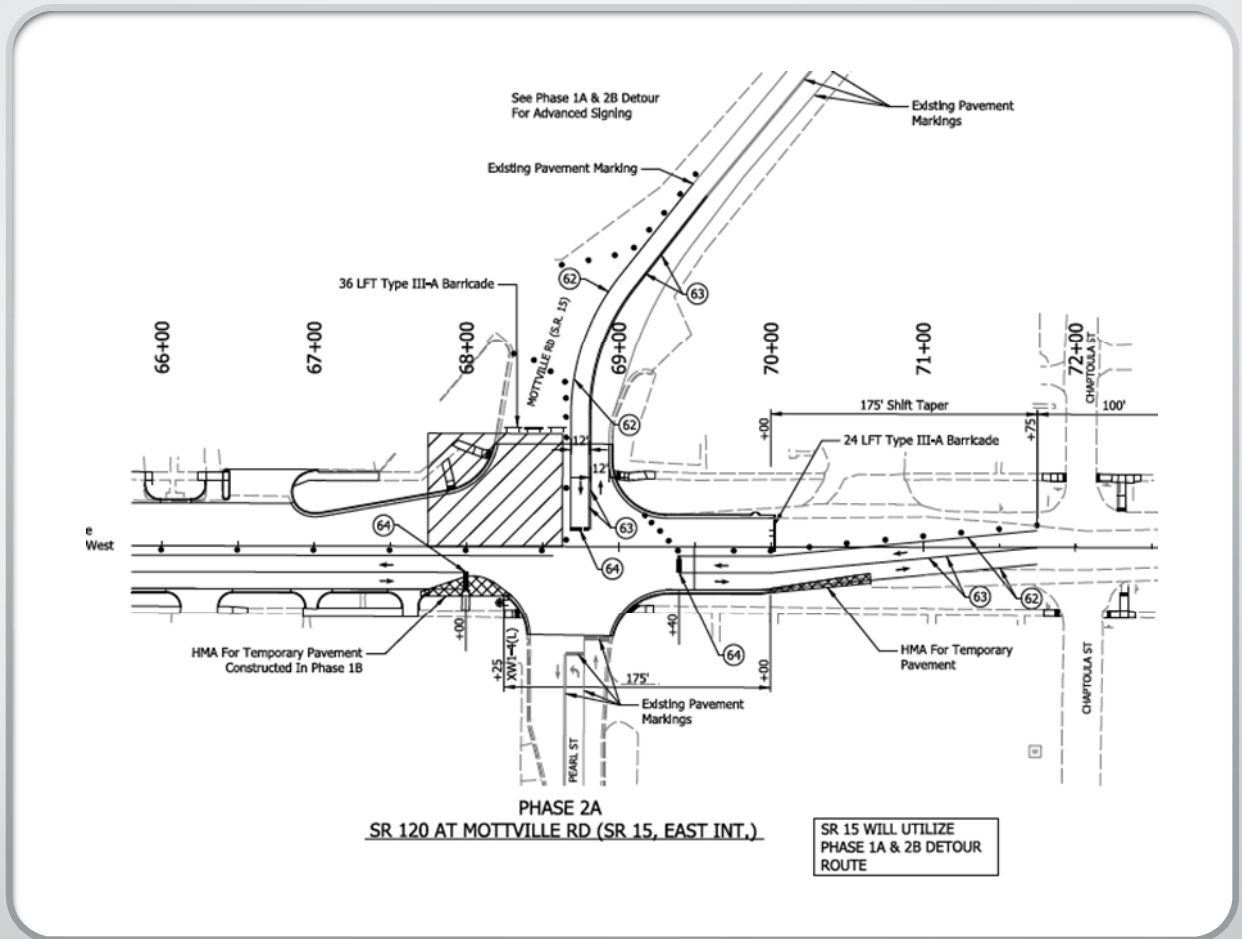
Phase 1a



- Currently scheduled for 70 Days
- Starting Mid-March, weather dependent
- Working between Division and Mottville
- Reconstructing south half of pavement. 2-way traffic on north half
- Please encourage use of truck routes if possible

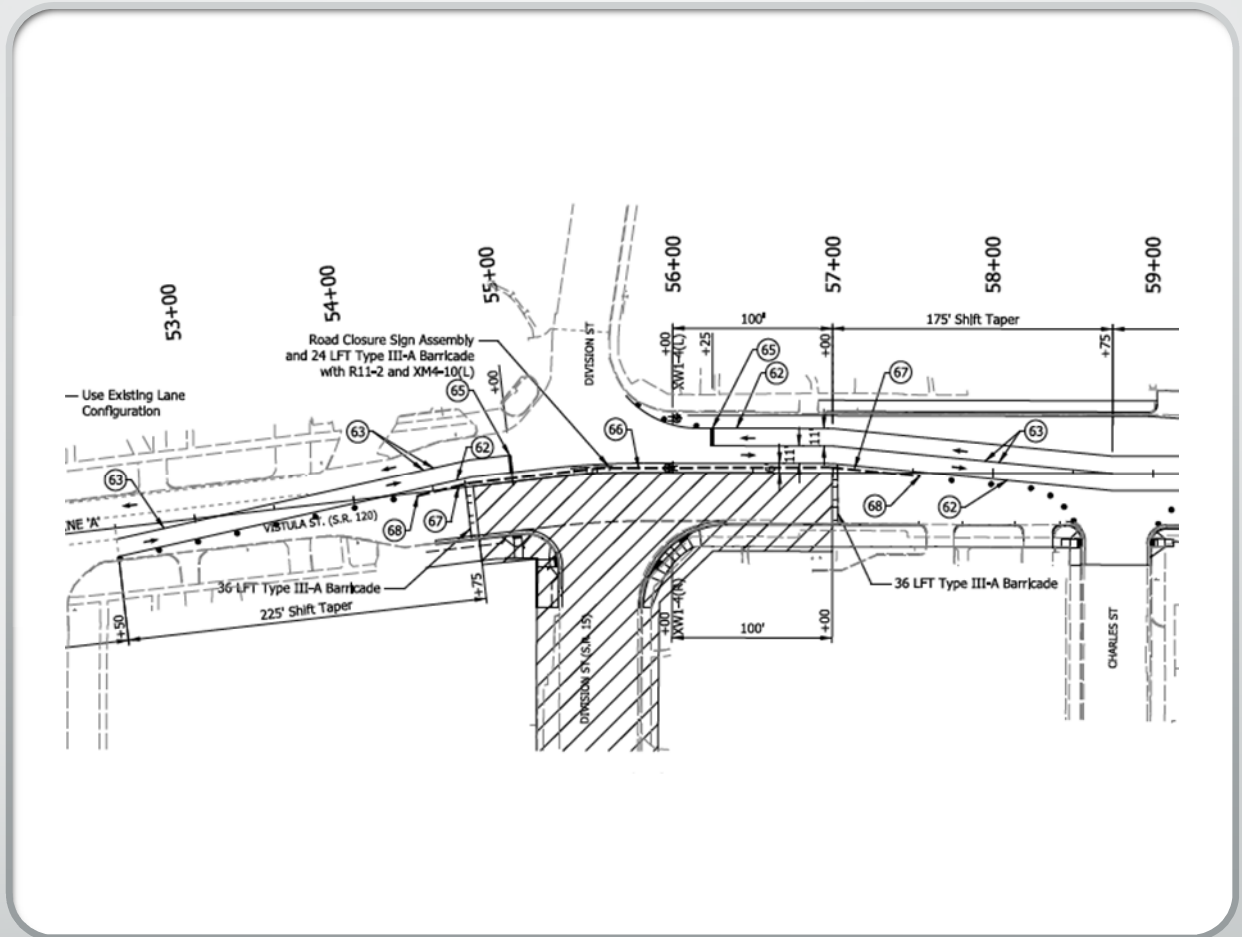
Phase 2a

- Currently scheduled for 13 Days
- Beginning end of June/early July
- Working at Mottville intersection
- Intersection back open to traffic. No right turns for southbound SR 15 traffic



Phase 3

- Currently scheduled for 80 Days
- Beginning early to mid-September
- Working on Division/SR 15
- SR 15 will be closed from the tracks to SR 120
- Detour route will utilize the Bristol Truck Route
- Last phase currently planned for 2026



2027 Work

- Remaining phases will include reconstructing the north half of the Division St. intersection, SR 120 west of the Division and east of Mottville
- Work anticipated to be complete by fall of 2027